The background is a solid dark blue. In the top right corner, there is a large, irregular pink shape. In the bottom left corner, there is a large, irregular yellow shape. A small yellow circle is located in the upper right area, partially overlapping the pink shape. A small dark blue circle is located in the lower left area, partially overlapping the yellow shape.

İSTANBUL KENT UNIVERSITY

ERASMUS+ OFFICE

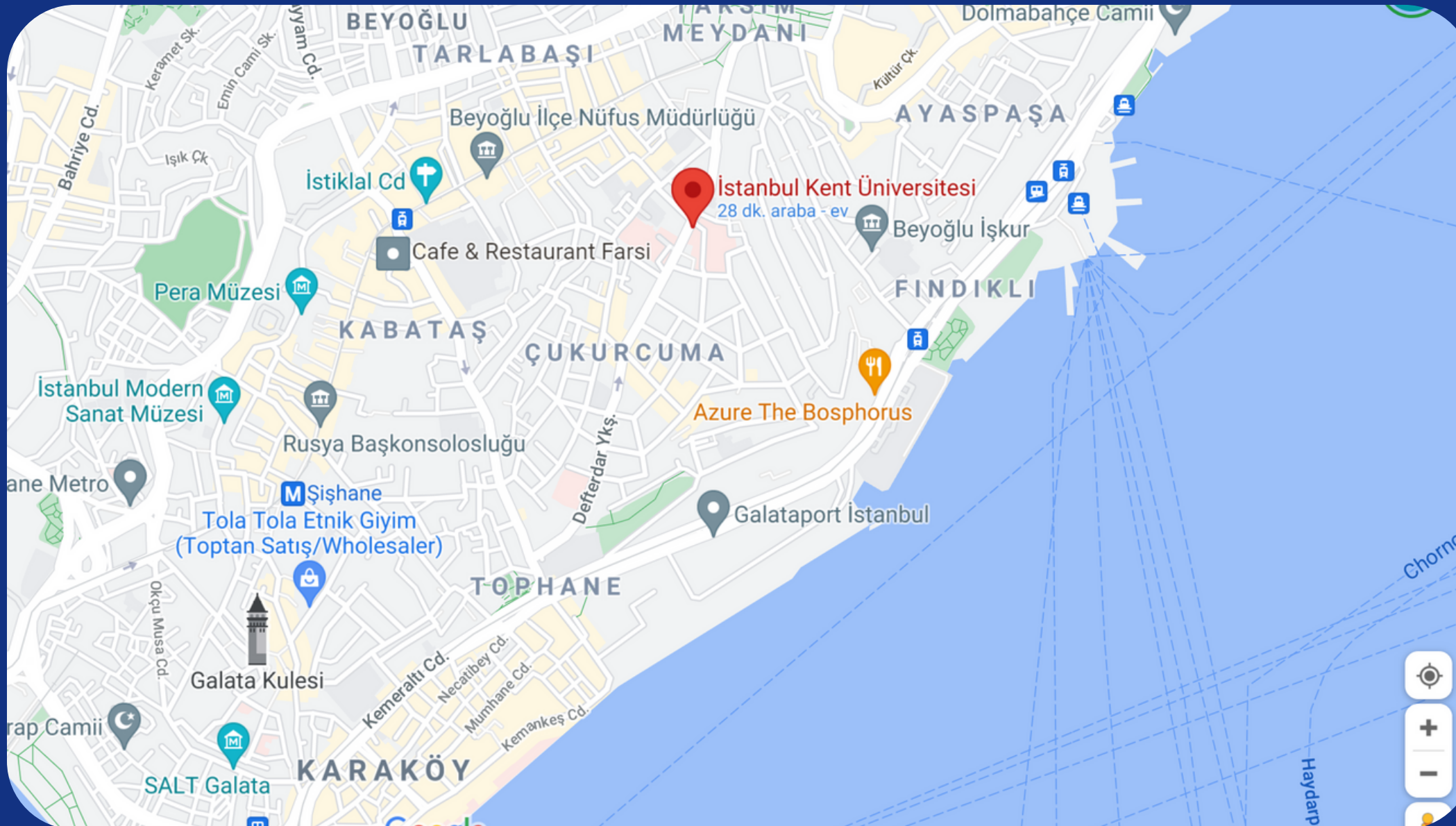


Istanbul Kent University was founded by the Unimpeded Education Foundation (ENEV) in 2016.



LOCATION

Istanbul Kent University is located on the European side, in Taksim, the very center of the Istanbul, with instant access to all that the city offers.



ISTANBUL KENT UNIVERSITY BY NUMBERS

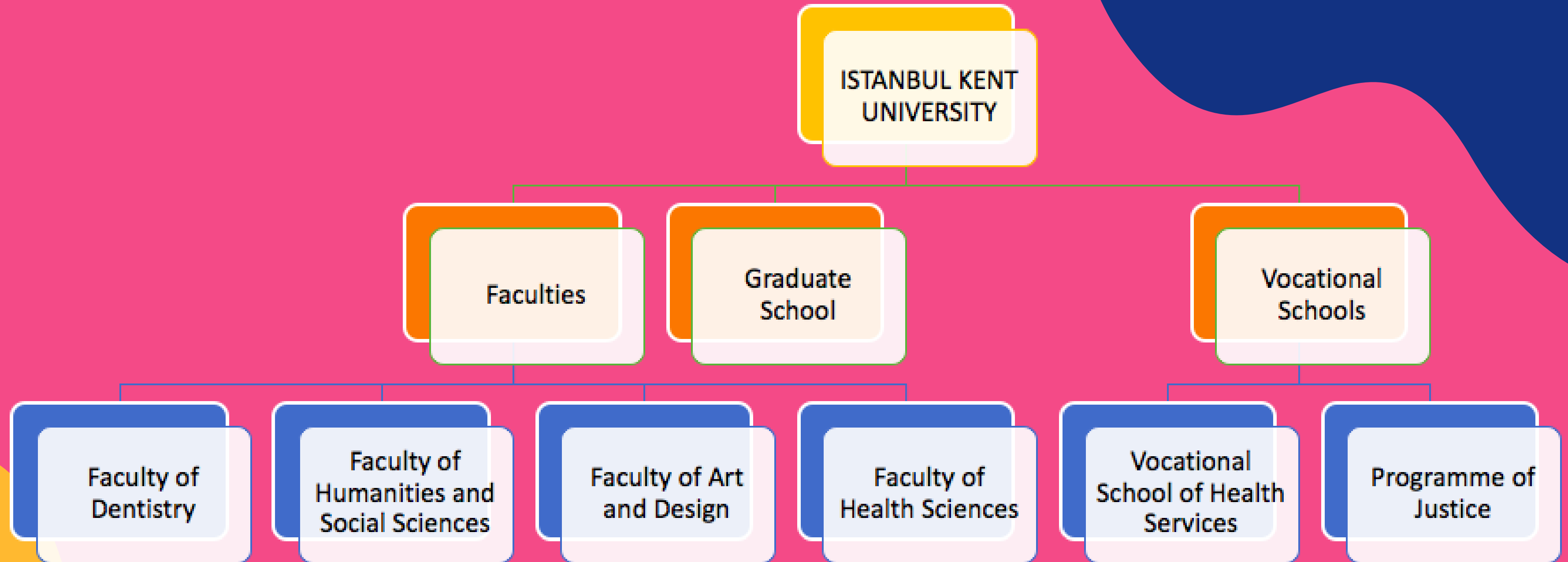
- 4 FACULTIES
 - 2 VOCATONAL SCHOOLS
 - 1 GRADUATE SCHOOL
-
- 17 BACHELOR'S DEGREE PROGRAMS
 - 11 ASSOCIATE'S DEGREE PROGRAMS
 - 4 GRADUATE PROGRAMS
-
- 24 STUDENT CLUBS
 - 3600 STUDENTS
 - 130 ACADEMICIANS

Facilities



- A total of 22 Laboratories dedicated to Dentistry and Health Sciences.
- Neuroscience Laboratory, Culinary arts Laboratory, Public Relations and Advertising Laboratory and Computer Laboratories.
- Lifelong Learning Center
- Career and Development Center
- Research and Development Center
- Dentistry Application and Research Center
- Oral and Dental Health Education, Application, and Research Center
- Disability Studies Research and Application Center

Academic Structure



Faculty of Humanities and Social Sciences

Public Relations and Advertising
Business Management
Social Services
International Trade and Logistics
Political Science and Public Administration
Psychology (English and Turkish Program)

Faculty of Health Sciences

Nursing
Midwifery
Physiotherapy and Rehabilitation
Pediatric Development
Health Administration
Nutrition and Dietetics
Language and Speech Therapy

Faculty of Dentistry

Dentistry (English and Turkish Program)

Faculty of Art and Design

Gastronomy and Culinary Arts

Residence Permit

Health Insurance



iSTANBUL





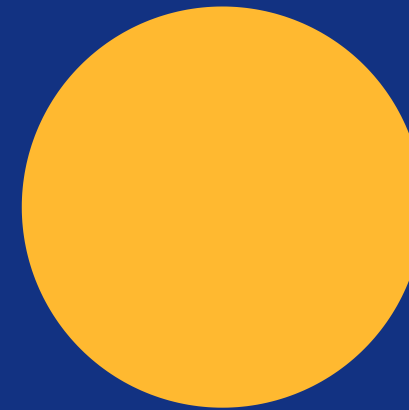
Istanbul and especially Taksim, has a rich cultural life with continuous concerts and music festivals, theatres, art exhibitions, film festivals, and more; supported by a vivid entertainment industry.



- **Filmekimi Movie Festival**
- **Istanbul International Film Festival**
- **Istanbul International Book Fair**
Beyoğlu Secondhand Book Festival
- **Istanbul International Biennial**
- **Istanbul Coffee Festival**
- **Istanbul International Theatre Festival**

MUSIC EVENTS

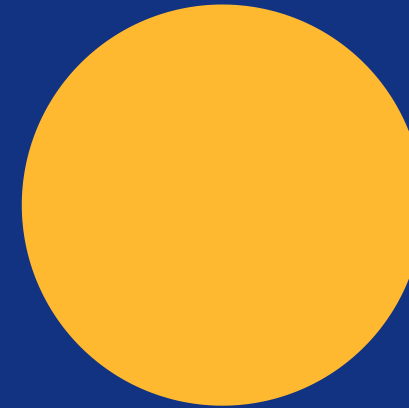
Istanbul International Music Festival, Chill-Out
Festival Istanbul, One Love Festival



Electronic Music Festivals such as Big Burn

Istanbul Jazz Festival, Akbank Jazz Festival

MUSIC EVENTS



Famous concert halls such as Babylon, Zorlu PSM, Salon İKSV where international musicians perform

SPORT EVENTS



Bosphorus Cross Continental Swim Race

Istanbul Marathon



HISTORICAL SITES

- Hagia Sophia Museum
- Blue Mosque
- Topkapı Palace Museum
- Dolmabahçe Palace
- Grand Bazaar and Spice Bazaar
- Galata Tower
- Basilica Cistern
- Museum of Innocence
- Istanbul Archeology Museum
- Pera Museum
- Istanbul Modern Art Museum
- Borusan Contemporary
- Sakip Sabanci Fine Arts Museum etc.



CONTACT US

ADRESS

Cihangir Mahallesi, SiraselvilerCaddesi, No:71,
34433 Beyoğlu, İSTANBUL.

E-MAIL

erasmus@kent.edu.tr

PHONE

+902126101010