



GUIDELINE FOR INCOMING STUDENTS AND STAFF

ISTANBUL KENT UNIVERSITY



ISTANBUL KENT
UNIVERSITY

OUR MISSION

To contribute to the development of Turkey in the journey to transformation, to find permanent solutions to current problems with the goal of securing our future, to be a preferable higher education institution for not only the students in Turkey but also in different countries of the world as well thanks to the educational opportunities offered at global standards, to produce, to develop and to provide service to every person, to help realize both the dreams of our young population, the real owners of the future, and of all people.

OUR VISION

To turn our students into competent and confident world citizens who are committed to national and cultural values and are capable of competing both nationally and internationally.

OUR VALUES

- ▶ Science
- ▶ Participation
- ▶ Innovation
- ▶ Sustainability
- ▶ Thinking
- ▶ Transparency
- ▶ Excellency in Education and Research
- ▶ Preservation of Ethical Values
- ▶ Protection of Fundamental Rights and Freedoms
- ▶ Standing against All Kinds of Discrimination and Being Respectful to All Differences

GENERAL INFORMATION

NUMBER OF STUDENTS
4.000

NUMBER OF STUDENT CLUBS
31

- ▶ 4 Faculties
- ▶ 2 Vocational Schools
- ▶ 1 Graduate School
- ▶ 1 School of Foreign Languages
- ▶ 21 Bachelor's Degree Programs
- ▶ 16 Associate's Degree Programs
- ▶ 16 Master's Degree Programs
- ▶ 2 Ph.D. Programs

LABORATORIES

- ▶ 22 Laboratories dedicated to Dentistry and Health Sciences.
- ▶ 1 Neuroscience Laboratory
- ▶ 1 Culinary arts Laboratory
- ▶ 1 Public Relations and Advertising Laboratory
- ▶ 4 Computer Laboratories.

DEVELOPMENT CENTERS

- ▶ 1 Lifelong Learning Center consisting of 10 Academies
- ▶ 1 Career and Development Center
- ▶ 1 Research and Development Center
- ▶ 1 Dentistry Application and Research Center
- ▶ 1 Oral and Dental Health Education, Application, and Research Center
- ▶ 1 Disability Studies Research and Application Center

ISTANBUL KENT UNIVERSITY FACULTIES

FACULTY OF DENTISTRY

- Dentistry (English Program)
- Dentistry (Turkish Program)

FACULTY OF HUMANITIES AND SOCIAL SCIENCES

- Public Relations and Advertising Business Administration (English Program)
- Business Administration (Turkish Program)
- Social Work
- International Trade and Logistics
- Political Science and Public Administration (English Program)
- Political Science and Public Administration (Turkish Program)
- Psychology (English Program)
- Psychology (Turkish Program)

FACULTY OF ART AND DESIGN

- Gastronomy and Culinary Arts (English Program)
- Gastronomy and Culinary Arts (Turkish Program)
- Interior Architecture

FACULTY OF HEALTH SCIENCES

- Nutrition And Dietetics
- Child Development
- Physiotherapy And Rehabilitation
- Physiotherapy And Rehabilitation (English)
- Nursing
- Midwifery
- Speech And Language Therapy

SELF- CONFIDENT

We are raising talented,
self-confident global citizens who
can compete in every field.



ASSOCIATE'S DEGREE VOCATIONAL SCHOOLS

VOCATIONAL SCHOOL

- School of Justice
- Computer Programming
- Haircare and Beauty Services (Cosmetology)

VOCATIONAL SCHOOL OF HEALTH SERVICES

- Anesthesia
- Child Development
- Electroneurophysiology
- Physiotherapy
- First and Emergency Aid
- Social Work
- Medical Documentation and Secretariat
- Medical Imaging Techniques
- Oral and Dental Health
- Operating Room Services
- Pharmacy Services

GRADUATE SCHOOLS

GRADUATE SCHOOL

- Clinical Psychology (Thesis / Non-Thesis Options)
- Business Administration (Thesis / Non-Thesis Options)
- Healthcare Management (Thesis / Non-Thesis Options)
- Occupational Health and Safety (Non-Thesis)
- Pediatric Dentistry (Thesis)
- Oral Implantology (Thesis / Non-Thesis Options)
- Child Development (Thesis)
- Gastronomy and Culinary Arts (Thesis / Non-Thesis Options)
- Public Health Nursing (Thesis)
- Social Work (Non-Thesis)
- Political Science and International Relations (Thesis - English Program)
- Pedodontics (Ph.D. Program)
- Orthodontics (Ph.D. Program)

SCHOOL OF FOREIGN LANGUAGES

- English Preparatory Class
- Turkish Preparatory Class

OUR
SCHOOLS

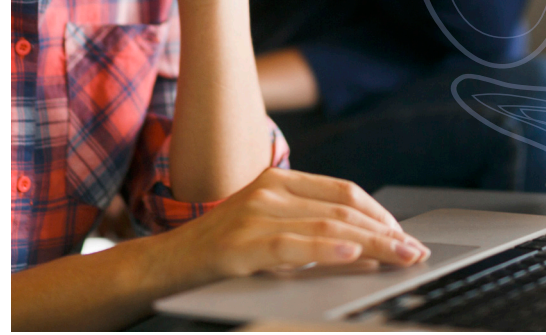
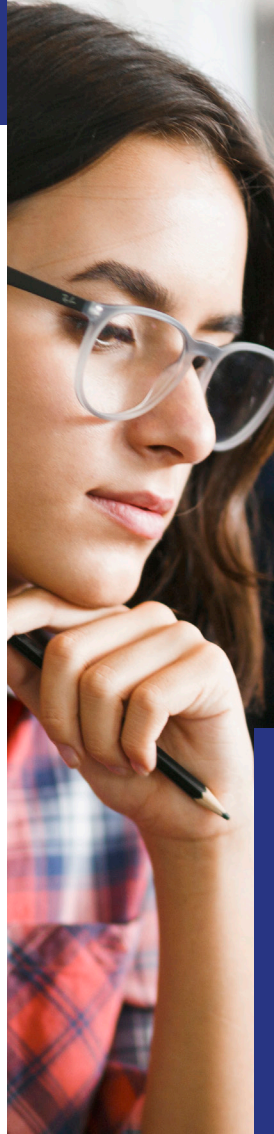
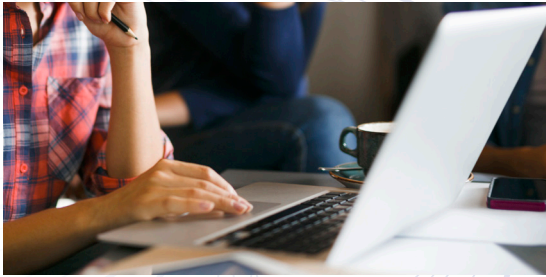


LANGUAGE POLICY AND COURSES

Istanbul Kent University has implemented several language learning initiatives since its foundation. We have introduced a General English Program called “**Kentlilere İngilizce**” (English for Members of Kent). It started as an online course and may shape up to be a physical one in the future.

The Program is available in levels through A1-B2. Courses are completely free of charge, and are offered to all students and members of our University. We have also organized an online English learning platform called “**Kent Evde İngilizce**” (Kent English at Home), which consists of a series of short educational videos, from level A1 to level B2, that you may find on the following link: <https://kentevdeakademi.kent.edu.tr/ingilizce.html>.

We encourage our students and members to benefit from every chance they may get in learning English. As for learning other languages such as Turkish, German and French, in-house courses are offered in the **TÖMER** (Language Learning, Research and Application Center).



OUR ERASMUS POLICY IN A NUTSHELL

We are always looking for partnerships with universities that have compatible program outcomes as ours. Student mobility is our primary target for two main reasons; to make sure our students have every opportunity to enhance themselves as highskilled, global professionals with intercultural capabilities, and to be able to contribute to the highskilled employment demands, scientific innovations, and entrepreneurship of our beloved country and world.

Teaching staff mobility is highly regarded for its international research and networking opportunities. Administrative staff mobility is encouraged greatly as well, in favor of the professional, and intercultural progress of our staff. We, as a university, continuously work hard to achieve and maintain the highest standards in higher education, and to be a valuable partner for our collaborators.



CITY OF ISTANBUL AND ISTANBUL KENT UNIVERSITY

Istanbul is one of the fastest growing modern cities of the World in terms of; Education, Business, Finance, Technology, Healthcare, Fashion, Music, Culinary Arts, Entertainment, and much more. In that sense, Istanbul presents many opportunities of networking and business connections. International fairs, congress, seminars and panels are held in Istanbul.

Istanbul is one city with two continents; it represents both Europe and Asia. The beautiful Bosphorus that connects the city; is not only a lovely sight, but a crucial means of transportation in our daily lives. Visitors and locals may find many tours and cruises through the Bosphorus via <https://www.sehirhatlari.istanbul/> en and experience some unforgettable landscapes of the city.

Istanbul Kent University is located on the European side, in Taksim, the heart of the city. In Istanbul Kent University, you do not just have the opportunity to receive a high-quality education with the latest technology and some of the best academicians in the world, all experts in their respective fields; but you also get to receive that education right at the very center of the amazing Istanbul, with instant access to all that the city offers.

Istanbul and especially Taksim, has a rich cultural life with continuous concerts and music festivals, theatres, art exhibitions, film festivals, and more; supported by a vivid entertainment industry, and some of the best culinary experiences of the world.

Some examples are; the famous Filmekimi Movie Festival, Istanbul International Film Festival, Istanbul Jazz Festival, Akbank Jazz Festival, Babylon and Peyote where international musicians perform, Istanbul International Book Fair, Beyoğlu Secondhand Book Festival, Istanbul International Biennial, Istanbul Tulip Festival, Istanbul International Music Festival, ChillOut Festival Istanbul, Bosphorus Cross Continental Swim Race, Istanbul Marathon, Istanbul Coffee Festival, Istanbul International Theatre Festival, Istanbul International Gastronomy Festival, Istanbul Theme Park, Istanbul Aquarium etc.

Istanbul is one of the most ancient and one of the most modern cities of the world at the same time, and it is truly unique. Our city is home to many civilizations, and is immensely rich with multiple cultures. Istanbul is a city that values diversity and all cultures and beliefs. Students can visit 1483 years old Hagia Sophia Museum, 411 years old Blue Mosque, 545 years old Topkapı Palace Museum, 194 years old Dolmabahçe Palace, 559 years old Grand Bazaar, 356 years old Spice Bazaar, 672 years old Galata Tower, Basilica Cistern, the Museum of Innocence, Bosphorus, Golden Horn, Istanbul Archeology Museum, Museum of Turkish & Islamic Arts, Pera Museum, Istanbul Modern Art Museum, Borusan Contemporary, Private Sakip Sabanci Fine Arts Museum etc.

All of the above mentioned places are located on the European side and are very close to our campus. Furthermore, many cultural centers such as French Cultural Centre, Spanish Cultural Centre, Japanese Cultural Centre and Italian Cultural Centre, where cultural activities are held, are located in Taksim as well

**OUR
KENT**



For information on concerts and festivals throughout the year in Istanbul, and very close to our university; you may visit websites such as;

www.iksv.org

www.icec.org

www.crrkonsersalonu.ibb.istanbul

www.biletix.com

You may also benefit from weekend excursions travelling from Istanbul; and visit wonderful historical sites such as; Gobeklitepe-which is the first temple of the World, Nemrut, Aphrodisias, and Ephesus; all part of the UNESCO World Heritage. You may also take some time to experience the amazing natural landscape of Turkey in sites such as; the Rose Festival of Isparta, the Salda Lake, the city of Amasya, and Cappadocia. For more information, please visit

www.goturkey.com and www.ktb.gov.tr



TRANSPORTATION IN ISTANBUL

The public transportation web of Istanbul is highly complex and there are numerous ways to arrive at the campus. Students can reach the campus via metro, funicular railway or buses. Students can buy an Istanbul Card from the machines in metro stations, Migros and various shops and use their Istanbul Card in public transport vehicles. Monthly student card fare is 50 liras. They can also rent bicycles or scooters

Route options are as follows:

- ▶ By taking the M2 Yenikapı-Haciosman metro line, and getting off at Taksim stop.
- ▶ By taking the F1 Kabataş-Taksim funicular line, and getting off at Taksim stop.
- ▶ By taking 129T bus route and getting off at Gümüşsuyu stop.
- ▶ By taking 76D bus route and getting off at Taksim Tünel stop.
- ▶ By taking 87 bus route and getting off at Taksim Tünel stop.
- ▶ By taking DT1 bus route and getting off at Taksim stop.
- ▶ By taking DT2 bus route and getting off at Gümüşsuyu stop.

Those who wish to come from the Asian side can either use the Marmaray line to Taksim or may prefer coming with ferries from Kadıköy or Üsküdar. The ferries may take you either to Kabataş or Beşiktaş; if you take the ferry to Kabataş, simply move on to the Funicular to Taksim; and if you take the ferry to Beşiktaş, you may catch one of the little yellow busus which are called Dolmuş to Taksim.

Those who wish to come from the Asian side can either use the Marmaray line to Taksim or may prefer coming with ferries from Kadıköy or Üsküdar. The ferries may take you either to Kabataş or to Beşiktaş; if you take the ferry to Kabataş, simply move on to the Funicular to Taksim to reach our university; and if you take the ferry to Beşiktaş, you may catch one of the little yellow buses which are called 'Dolmuş' to Taksim.

Our university is only a 5-10 minutes walk from the Taksim metro station, towards the Siraselviler Street. For more information, please contact us directly and/or visit www.iett.istanbul and www.sehirhatlari.istanbul



ACCOMMODATION IN ISTANBUL

Our university refers our students to nearby private dormitories. You may visit their website for detailed information:

- ▶ -Cihangir Private Girls' Dormitory - www.cihangirkiziyurdu.com
- ▶ -Academia Residence - www.academiaogrenciyurdu.com
- ▶ -Alaçatı Girls' Dormitory - www.alacatikizogrenci-yurdu.com

For the incoming staff, global websites such as

- ▶ www.booking.com
- ▶ www.hotels.com
- ▶ www.tripadvisor.com might be useful.

Please do not hesitate to contact us for any information or questions.



HEALTHCARE IN ISTANBUL

Nearby Hospitals to our university include; Taksim Eğitim ve Araştırma Hospital (State), Acıbadem Hospital in Taksim (Private), Surp Agop Hospital (Private), Sen Jorj Austrian Hospitalı (Private), Beyoğlu Göz Eğitim ve Araştırma Hospital (State), Memorial Şişli Hospital (Private), Şişli Hamidiye Etfal Eğitim ve Araştırma Hospital (State), Okmeydanı Training and Research Hospital (State), Şişli Florence Nightingale Hospital (Private), and American Hospital (Private).

There are also many pharmacies around our university area which are generally open between 9am-7pm . The information for on-duty pharmacies which are open on particular Sundays and night hours may be found online via

- ▶ www.istanbuleczaciodasi.org.tr
- ▶ www.eczaneler.gen.tr



CONTACT INFORMATION

For any further information or assistance, please contact our staff through Erasmus+ and International Programs Office

ADDRESS

Istanbul Kent University, Cihangir Mahallesi, Siraselviler Caddesi, No:71, 34433 Beyoglu, ISTANBUL

E-MAIL:

► erasmus@kent.edu.tr (Official email)

Assoc. Prof. Demet TÜZÜNKAN,

Erasmus+ and International Programs Office Coordinator

► demet.tuzunkan@kent.edu.tr

Ms. İpek SAYRAK,

*Erasmus+ and International Programs Office
Vice-Coordinator & In-House Translator*

► ipek.sayrak@kent.edu.tr

Ms. Ayşe Gül AYFER,

Erasmus+ and International Programs Specialist

► aysegul.ayfer@kent.edu.tr

Mr. Emre ATSÜ,

International Relations Representative

► emre.atsu@kent.edu.tr

TELEPHONE

+90 (212) 610 10 10

Extensions: 344, 306, 497 or 521



İSTANBUL KENT
UNIVERSITY